

4632直角电机系列

4632 Right Angle Motor Series

典型应用: 工业装备、医疗设备、门机系统等

Typical Application: Industrial equipment, Medical equipment, Door and machine systems, and etc.

输出功率: 约0.6W~3.9W

Output Power: 0.6W~3.9W

金属输出轴(可选直径6mm、8mm轴)、可定制

Metal output shaft and customizable



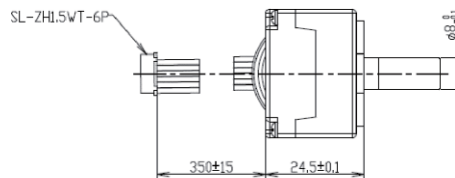
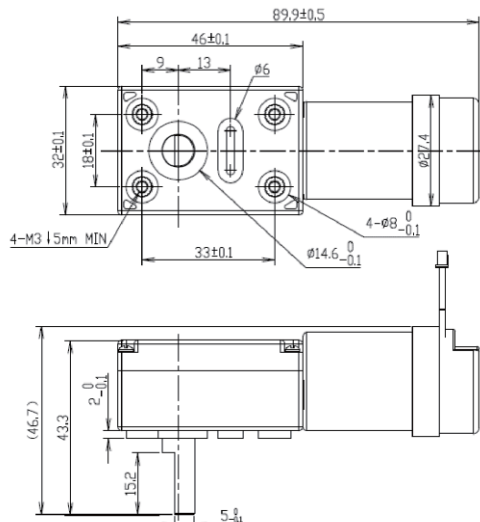
■ 技术数据

型号 Model	典型应用参数 Typical Application Parameters									Max Rated Torque of Gear Box 齿轮箱最大容许力矩	Max Instant Torque of Gear Box 齿轮箱瞬间容许力矩	Gear Ratio 减速比	Gear Box Length 减速箱长 L1
	Operating Range 使用范围	Rated 额定值	At No Load 空载数据		At Rated Load 负载数据			Motor Overall Length 马达总长 L					
	Voltage 电压	Voltage 电压	Speed 转速	Current 电流	Speed 转速	Current 电流	Torque 转矩						
VDC	VDC	rpm	mA(MAX)	rpm	A(MAX)	kgf.cm	N.m	mm	kgf.cm	kgf.cm	mm		
ZWPL4632-60-01	8~30	24	102	13	81	0.16	0.9	0.08	30.8	5.2	15.6	59.0	89.9
ZWPL4632-100-01	8~30	24	57	13	46	0.16	1.5	0.15	30.8	9.1	27.3	104.5	89.9
ZWPL4632-140-01	8~30	24	44	13	35	0.11	2.0	0.20	30.8	12	36	136.9	89.9
ZWPL4632-250-01	8~30	24	24	13	19	0.11	2.9	0.29	30.8	21.3	63.9	246.5	89.9
ZWPL4632-320-01	8~30	24	18	13	15	0.11	3.8	0.38	30.8	25	75	324.5	89.9
ZWPL4632-420-01	8~30	24	14	13	11	0.11	5.0	0.49	30.8	25	75	424.9	89.9
ZWPL4632-600-01	8~30	24	10	13	8	0.11	7.1	0.70	30.8	25	75	601.8	89.9
ZWPL4632-790-01	8~30	24	8	13	6	0.11	9.3	0.91	30.8	25	75	788.0	89.9
ZWPL4632-1040-01	8~30	24	6	13	5	0.11	12.2	1.20	30.8	25	75	1037.2	89.9

* 以上规格数据仅供参考, 如有修改恕不另行通知, 可按需求定制

* above specifications are subject to change without notice, just for reference and customizable according to requirements

■ 电机尺寸图



双霍尔传感器, 磁铁8对极, 电机本体转一圈, 出来8个信号, 采用6pin, ph1.5接线端子。

线序分别是:

1 MOT+	红	4 hall B	紫
2 hall vcc 3.3v	黄	5 hall gnd	蓝
3 hall A	绿	6 MOT-	白